

Newsletter- 1st March 2024



Dear Parents and Carers,

A super busy week at Springfield with our Spring Board pupils going on the first residential of the year. They enjoyed a very wet but extremely fun camping adventure. Well done to pupils and staff!

Lots of wonderful activities and lessons taking place in the secondary department including a fab trip to Jodrell Bank where some pupils explored their space topic outside of the classroom.

Primary finished the week with a visit from the Fire Service - the pupils loved meeting the fire fighters and of course jumping on board the fire engine and experimenting with the hose and siren!

Hope you all had a lovely weekend and are looking forward to the week ahead!

Lisa Hodgkison Headteacher Crewe and Wilmslow

Kim Cepeda-Wilson Head of School Crewe

World Book Day

Next week is World Book Day.

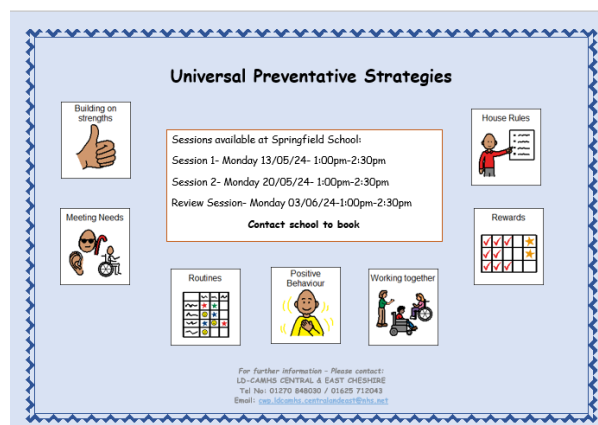
Lower School - Thursday 7th March

Upper School - Friday 8th March

Children are invited to come dressed as their favourite book characters.

<https://www.worldbookday.com/>

LD CAMHS



Swimming Reminder

Can you please ensure that your child comes to school with their swimming kit on their timetabled swimming day.

This must include either a swimming pad (these are available at most supermarkets and chemists) or the specialist incontinence swimwear available at [Www.incywincy.net](http://www.incywincy.net) or Amazon if your child is not toilet trained.

This is for the benefit of all swimmers. Your support is greatly appreciated.

Community Activities

I would like to introduce myself to you, my name is Bethany Walker and I am the director of a community interest company (CIC) called Bethany Walker Respite and Support. The purpose of our company is to provide accessible activities in the community for children with additional needs and their families, we facilitate activities appropriate for individuals and their siblings to interact with peers outside of school.

Since holding these events we have also found that parents also enjoy being able to relax and talk to one and other while at the activities and have had the joy of watching friendships bloom between children and families.

Our first event is a Disco/Youth Club at Autism Inclusive in Crewe on March 13th, 16:00-20:00. This session costs £3 per child and families can drop in any time.

We also have events in the school holidays including:

The Wingate Centre on Tuesdays. 10-11 in the sensory room, 11-12 in the gym and then lunch. This session costs £15 per child.

Finally we have Our Space in Newcastle Under Lyme every Thursday 09:30-12:30 and this costs £8 per child,



The School Gate

Join us on Facebook
Our Motherhood Community

WELLBEING CALENDAR - MARCH 2024

For more information on activities
visit www.motherwellcheshireco.com
or email info@motherwellcheshireco.com
or call 301.440.1234

Monday	Tuesday	Wednesday	Thursday	Friday	Sat	Sun
OB/GYN CANCER AWARENESS MONTH 		Share to Reach Others: EVERY DAY 100% 100% of the time, 100% of the people, 100% of the time.		Understanding Domestic Abuse 12 PM - 2 PM \$100 Cash/Donation - Open	100% 100% 100%	100% 100% 100%
Half Day Washington Legal Advocacy 9 AM - 3 PM \$100 Cash/Donation - Open	06 Domestic Violence Support Group 12 PM - 2 PM \$100 Cash/Donation - Open	Women's Health Group 10 AM - 12 PM \$100 Cash/Donation - Open		Understanding Domestic Abuse 12 PM - 2 PM \$100 Cash/Donation - Open	100% 100% 100%	100% 100% 100%
Dear Sister of Love Project (page 1) 10 AM - 12 PM \$100 Cash/Donation - Open	07 Domestic Violence Support Group 12 PM - 2 PM \$100 Cash/Donation - Open	PT, DPT - 10 AM 10 AM - 12 PM \$100 Cash/Donation - Open	Understanding Domestic Abuse 12 PM - 2 PM \$100 Cash/Donation - Open	Understanding Domestic Abuse 12 PM - 2 PM \$100 Cash/Donation - Open	100% 100% 100%	100% 100% 100%
Dear Sister of Love Project (page 2) 10 AM - 12 PM \$100 Cash/Donation - Open	08 Domestic Violence Support Group 12 PM - 2 PM \$100 Cash/Donation - Open	PT, DPT - 10 AM 10 AM - 12 PM \$100 Cash/Donation - Open		Understanding Domestic Abuse 12 PM - 2 PM \$100 Cash/Donation - Open	100% 100% 100%	100% 100% 100%
Domestic Violence Support Group 12 PM - 2 PM \$100 Cash/Donation - Open	09 Domestic Violence Support Group 12 PM - 2 PM \$100 Cash/Donation - Open	Working with Community Service Workers 10 AM - 12 PM \$100 Cash/Donation - Open	Understanding Domestic Abuse 12 PM - 2 PM \$100 Cash/Donation - Open	Understanding Domestic Abuse 12 PM - 2 PM \$100 Cash/Donation - Open	100% 100% 100%	100% 100% 100%
Domestic Violence Support Group 12 PM - 2 PM \$100 Cash/Donation - Open	10 Domestic Violence Support Group 12 PM - 2 PM \$100 Cash/Donation - Open	Working with Community Service Workers 10 AM - 12 PM \$100 Cash/Donation - Open	Understanding Domestic Abuse 12 PM - 2 PM \$100 Cash/Donation - Open	Understanding Domestic Abuse 12 PM - 2 PM \$100 Cash/Donation - Open	100% 100% 100%	100% 100% 100%
Domestic Violence Support Group 12 PM - 2 PM \$100 Cash/Donation - Open	11 Domestic Violence Support Group 12 PM - 2 PM \$100 Cash/Donation - Open	Working with Community Service Workers 10 AM - 12 PM \$100 Cash/Donation - Open	Understanding Domestic Abuse 12 PM - 2 PM \$100 Cash/Donation - Open	Understanding Domestic Abuse 12 PM - 2 PM \$100 Cash/Donation - Open	100% 100% 100%	100% 100% 100%
Domestic Violence Support Group 12 PM - 2 PM \$100 Cash/Donation - Open	12 Domestic Violence Support Group 12 PM - 2 PM \$100 Cash/Donation - Open	Working with Community Service Workers 10 AM - 12 PM \$100 Cash/Donation - Open	Understanding Domestic Abuse 12 PM - 2 PM \$100 Cash/Donation - Open	Understanding Domestic Abuse 12 PM - 2 PM \$100 Cash/Donation - Open	100% 100% 100%	100% 100% 100%

MOTHERWELLCESHIRECO.COM



CE-03-24

Join us on Facebook
MotherWellChesireCommunity

CHESTWELL
WELLBEING CALENDAR - MARCH 2024

For more information on activities visit www.motherwellchesire.co.uk or email info@motherwellchesire.co.uk or call 01623 821100

Monday	Tuesday	Wednesday	Thursday	Friday	Sat	Sun
COVARANCER AWARENESS MONTH 		WEDNESDAY RECOVERY GROUP Recovery Group for women who have experienced a miscarriage or stillbirth. The group provides a safe space for women to share their experiences and feelings.				
04 The Day Care 10.00am - 12.00pm 12.30pm - 2.00pm 2.30pm - 4.00pm 4.30pm - 6.00pm	05 WOMEN'S FLU/SHINGLES 10.00am - 12.00pm 12.30pm - 2.00pm 2.30pm - 4.00pm 4.30pm - 6.00pm	06 Women's Health Group 10.00am - 12.00pm 12.30pm - 2.00pm 2.30pm - 4.00pm 4.30pm - 6.00pm	07 Mental Health U.K. (M/17) 10.00am - 12.00pm 12.30pm - 2.00pm 2.30pm - 4.00pm 4.30pm - 6.00pm	08 The Day Care 10.00am - 12.00pm 12.30pm - 2.00pm 2.30pm - 4.00pm 4.30pm - 6.00pm	09 The Day Care 10.00am - 12.00pm 12.30pm - 2.00pm 2.30pm - 4.00pm 4.30pm - 6.00pm	10 WOMEN'S FLU/SHINGLES 10.00am - 12.00pm 12.30pm - 2.00pm 2.30pm - 4.00pm 4.30pm - 6.00pm
11 The Day Care 10.00am - 12.00pm 12.30pm - 2.00pm 2.30pm - 4.00pm 4.30pm - 6.00pm	12 WOMEN'S FLU/SHINGLES 10.00am - 12.00pm 12.30pm - 2.00pm 2.30pm - 4.00pm 4.30pm - 6.00pm	13 WOMEN'S FLU/SHINGLES 10.00am - 12.00pm 12.30pm - 2.00pm 2.30pm - 4.00pm 4.30pm - 6.00pm	14 Mental Health U.K. (M/17) 10.00am - 12.00pm 12.30pm - 2.00pm 2.30pm - 4.00pm 4.30pm - 6.00pm	15 The Day Care 10.00am - 12.00pm 12.30pm - 2.00pm 2.30pm - 4.00pm 4.30pm - 6.00pm	16 The Day Care 10.00am - 12.00pm 12.30pm - 2.00pm 2.30pm - 4.00pm 4.30pm - 6.00pm	17 WOMEN'S FLU/SHINGLES 10.00am - 12.00pm 12.30pm - 2.00pm 2.30pm - 4.00pm 4.30pm - 6.00pm
18 The Day Care 10.00am - 12.00pm 12.30pm - 2.00pm 2.30pm - 4.00pm 4.30pm - 6.00pm	19 WOMEN'S FLU/SHINGLES 10.00am - 12.00pm 12.30pm - 2.00pm 2.30pm - 4.00pm 4.30pm - 6.00pm	20 The Day Care 10.00am - 12.00pm 12.30pm - 2.00pm 2.30pm - 4.00pm 4.30pm - 6.00pm	21 Mental Health U.K. (M/17) 10.00am - 12.00pm 12.30pm - 2.00pm 2.30pm - 4.00pm 4.30pm - 6.00pm	22 The Day Care 10.00am - 12.00pm 12.30pm - 2.00pm 2.30pm - 4.00pm 4.30pm - 6.00pm	23 The Day Care 10.00am - 12.00pm 12.30pm - 2.00pm 2.30pm - 4.00pm 4.30pm - 6.00pm	24 WOMEN'S FLU/SHINGLES 10.00am - 12.00pm 12.30pm - 2.00pm 2.30pm - 4.00pm 4.30pm - 6.00pm
25 The Day Care 10.00am - 12.00pm 12.30pm - 2.00pm 2.30pm - 4.00pm 4.30pm - 6.00pm	26 WOMEN'S FLU/SHINGLES 10.00am - 12.00pm 12.30pm - 2.00pm 2.30pm - 4.00pm 4.30pm - 6.00pm	27 The Day Care 10.00am - 12.00pm 12.30pm - 2.00pm 2.30pm - 4.00pm 4.30pm - 6.00pm	28 Mental Health U.K. (M/17) 10.00am - 12.00pm 12.30pm - 2.00pm 2.30pm - 4.00pm 4.30pm - 6.00pm	29 The Day Care 10.00am - 12.00pm 12.30pm - 2.00pm 2.30pm - 4.00pm 4.30pm - 6.00pm	30 The Day Care 10.00am - 12.00pm 12.30pm - 2.00pm 2.30pm - 4.00pm 4.30pm - 6.00pm	31 WOMEN'S FLU/SHINGLES 10.00am - 12.00pm 12.30pm - 2.00pm 2.30pm - 4.00pm 4.30pm - 6.00pm
26 The Day Care 10.00am - 12.00pm 12.30pm - 2.00pm 2.30pm - 4.00pm 4.30pm - 6.00pm	27 WOMEN'S FLU/SHINGLES 10.00am - 12.00pm 12.30pm - 2.00pm 2.30pm - 4.00pm 4.30pm - 6.00pm	28 The Day Care 10.00am - 12.00pm 12.30pm - 2.00pm 2.30pm - 4.00pm 4.30pm - 6.00pm	29 Mental Health U.K. (M/17) 10.00am - 12.00pm 12.30pm - 2.00pm 2.30pm - 4.00pm 4.30pm - 6.00pm	30 The Day Care 10.00am - 12.00pm 12.30pm - 2.00pm 2.30pm - 4.00pm 4.30pm - 6.00pm	31 The Day Care 10.00am - 12.00pm 12.30pm - 2.00pm 2.30pm - 4.00pm 4.30pm - 6.00pm	01 WOMEN'S FLU/SHINGLES 10.00am - 12.00pm 12.30pm - 2.00pm 2.30pm - 4.00pm 4.30pm - 6.00pm
28 The Day Care 10.00am - 12.00pm 12.30pm - 2.00pm 2.30pm - 4.00pm 4.30pm - 6.00pm	29 WOMEN'S FLU/SHINGLES 10.00am - 12.00pm 12.30pm - 2.00pm 2.30pm - 4.00pm 4.30pm - 6.00pm	30 The Day Care 10.00am - 12.00pm 12.30pm - 2.00pm 2.30pm - 4.00pm 4.30pm - 6.00pm	31 Mental Health U.K. (M/17) 10.00am - 12.00pm 12.30pm - 2.00pm 2.30pm - 4.00pm 4.30pm - 6.00pm	01 The Day Care 10.00am - 12.00pm 12.30pm - 2.00pm 2.30pm - 4.00pm 4.30pm - 6.00pm	02 The Day Care 10.00am - 12.00pm 12.30pm - 2.00pm 2.30pm - 4.00pm 4.30pm - 6.00pm	03 WOMEN'S FLU/SHINGLES 10.00am - 12.00pm 12.30pm - 2.00pm 2.30pm - 4.00pm 4.30pm - 6.00pm
29 The Day Care 10.00am - 12.00pm 12.30pm - 2.00pm 2.30pm - 4.00pm 4.30pm - 6.00pm	30 WOMEN'S FLU/SHINGLES 10.00am - 12.00pm 12.30pm - 2.00pm 2.30pm - 4.00pm 4.30pm - 6.00pm	31 The Day Care 10.00am - 12.00pm 12.30pm - 2.00pm 2.30pm - 4.00pm 4.30pm - 6.00pm	01 Mental Health U.K. (M/17) 10.00am - 12.00pm 12.30pm - 2.00pm 2.30pm - 4.00pm 4.30pm - 6.00pm	02 The Day Care 10.00am - 12.00pm 12.30pm - 2.00pm 2.30pm - 4.00pm 4.30pm - 6.00pm	03 The Day Care 10.00am - 12.00pm 12.30pm - 2.00pm 2.30pm - 4.00pm 4.30pm - 6.00pm	04 WOMEN'S FLU/SHINGLES 10.00am - 12.00pm 12.30pm - 2.00pm 2.30pm - 4.00pm 4.30pm - 6.00pm
30 The Day Care 10.00am - 12.00pm 12.30pm - 2.00pm 2.30pm - 4.00pm 4.30pm - 6.00pm	31 WOMEN'S FLU/SHINGLES 10.00am - 12.00pm 12.30pm - 2.00pm 2.30pm - 4.00pm 4.30pm - 6.00pm	01 The Day Care 10.00am - 12.00pm 12.30pm - 2.00pm 2.30pm - 4.00pm 4.30pm - 6.00pm	02 Mental Health U.K. (M/17) 10.00am - 12.00pm 12.30pm - 2.00pm 2.30pm - 4.00pm 4.30pm - 6.00pm	03 The Day Care 10.00am - 12.00pm 12.30pm - 2.00pm 2.30pm - 4.00pm 4.30pm - 6.00pm	04 The Day Care 10.00am - 12.00pm 12.30pm - 2.00pm 2.30pm - 4.00pm 4.30pm - 6.00pm	05 WOMEN'S FLU/SHINGLES 10.00am - 12.00pm 12.30pm - 2.00pm 2.30pm - 4.00pm 4.30pm - 6.00pm
31 The Day Care 10.00am - 12.00pm 12.30pm - 2.00pm 2.30pm - 4.00pm 4.30pm - 6.00pm	01 WOMEN'S FLU/SHINGLES 10.00am - 12.00pm 12.30pm - 2.00pm 2.30pm - 4.00pm 4.30pm - 6.00pm	02 The Day Care 10.00am - 12.00pm 12.30pm - 2.00pm 2.30pm - 4.00pm 4.30pm - 6.00pm	03 Mental Health U.K. (M/17) 10.00am - 12.00pm 12.30pm - 2.00pm 2.30pm - 4.00pm 4.30pm - 6.00pm	04 The Day Care 10.00am - 12.00pm 12.30pm - 2.00pm 2.30pm - 4.00pm 4.30pm - 6.00pm	05 The Day Care 10.00am - 12.00pm 12.30pm - 2.00pm 2.30pm - 4.00pm 4.30pm - 6.00pm	06 WOMEN'S FLU/SHINGLES 10.00am - 12.00pm 12.30pm - 2.00pm 2.30pm - 4.00pm 4.30pm - 6.00pm
01 The Day Care 10.00am - 12.00pm 12.30pm - 2.00pm 2.30pm - 4.00pm 4.30pm - 6.00pm	02 WOMEN'S FLU/SHINGLES 10.00am - 12.00pm 12.30pm - 2.00pm 2.30pm - 4.00pm 4.30pm - 6.00pm	03 The Day Care 10.00am - 12.00pm 12.30pm - 2.00pm 2.30pm - 4.00pm 4.30pm - 6.00pm	04 Mental Health U.K. (M/17) 10.00am - 12.00pm 12.30pm - 2.00pm 2.30pm - 4.00pm 4.30pm - 6.00pm	05 The Day Care 10.00am - 12.00pm 12.30pm - 2.00pm 2.30pm - 4.00pm 4.30pm - 6.00pm	06 The Day Care 10.00am - 12.00pm 12.30pm - 2.00pm 2.30pm - 4.00pm 4.30pm - 6.00pm	07 WOMEN'S FLU/SHINGLES 10.00am - 12.00pm 12.30pm - 2.00pm 2.30pm - 4.00pm 4.30pm - 6.00pm
02 The Day Care 10.00am - 12.00pm 12.30pm - 2.00pm 2.30pm - 4.00pm 4.30pm - 6.00pm	03 WOMEN'S FLU/SHINGLES 10.00am - 12.00pm 12.30pm - 2.00pm 2.30pm - 4.00pm 4.30pm - 6.00pm	04 The Day Care 10.00am - 12.00pm 12.30pm - 2.00pm 2.30pm - 4.00pm 4.30pm - 6.00pm	05 Mental Health U.K. (M/17) 10.00am - 12.00pm 12.30pm - 2.00pm 2.30pm - 4.00pm 4.30pm - 6.00pm	06 The Day Care 10.00am - 12.00pm 12.30pm - 2.00pm 2.30pm - 4.00pm 4.30pm - 6.00pm	07 The Day Care 10.00am - 12.00pm 12.30pm - 2.00pm 2.30pm - 4.00pm 4.30pm - 6.00pm	08 WOMEN'S FLU/SHINGLES 10.00am - 12.00pm 12.30pm - 2.00pm 2.30pm - 4.00pm 4.30pm - 6.00pm
03 The Day Care 10.00am - 12.00pm 12.30pm - 2.00pm 2.30pm - 4.00pm 4.30pm - 6.00pm	04 WOMEN'S FLU/SHINGLES 10.00am - 12.00pm 12.30pm - 2.00pm 2.30pm - 4.00pm 4.30pm - 6.00pm	05 The Day Care 10.00am - 12.00pm 12.30pm - 2.00pm 2.30pm - 4.00pm 4.30pm - 6.00pm	06 Mental Health U.K. (M/17) 10.00am - 12.00pm 12.30pm - 2.00pm 2.30pm - 4.00pm 4.30pm - 6.00pm	07 The Day Care 10.00am - 12.00pm 12.30pm - 2.00pm 2.30pm - 4.00pm 4.30pm - 6.00pm	08 The Day Care 10.00am - 12.00pm 12.30pm - 2.00pm 2.30pm - 4.00pm 4.30pm - 6.00pm	09 WOMEN'S FLU/SHINGLES 10.00am - 12.00pm 12.30pm - 2.00pm 2.30pm - 4.00pm 4.30pm - 6.00pm
04 The Day Care 10.00am - 12.00pm 12.30pm - 2.00pm 2.30pm - 4.00pm 4.30pm - 6.00pm	05 WOMEN'S FLU/SHINGLES 10.00am - 12.00pm 12.30pm - 2.00pm 2.30pm - 4.00pm 4.30pm - 6.00pm	06 The Day Care 10.00am - 12.00pm 12.30pm - 2.00pm 2.30pm - 4.00pm 4.30pm - 6.00pm	07 Mental Health U.K. (M/17) 10.00am - 12.00pm 12.30pm - 2.00pm 2.30pm - 4.00pm 4.30pm - 6.00pm	08 The Day Care 10.00am - 12.00pm 12.30pm - 2.00pm 2.30pm - 4.00pm 4.30pm - 6.00pm	09 The Day Care 10.00am - 12.00pm 12.30pm - 2.00pm 2.30pm - 4.00pm 4.30pm - 6.00pm	10 WOMEN'S FLU/SHINGLES 10.00am - 12.00pm 12.30pm - 2.00pm 2.30pm - 4.00pm 4.30pm - 6.00pm
05 The Day Care 10.00am - 12.00pm 12.30pm - 2.00pm 2.30pm - 4.00pm 4.30pm - 6.00pm	06 WOMEN'S FLU/SHINGLES 10.00am - 12.00pm 12.30pm - 2.00pm 2.30pm - 4.00pm 4.30pm - 6.00pm	07 The Day Care 10.00am - 12.00pm 12.30pm - 2.00pm 2.30pm - 4.00pm 4.30pm - 6.00pm	08 Mental Health U.K. (M/17) 10.00am - 12.00pm 12.30pm - 2.00pm 2.30pm - 4.00pm 4.30pm - 6.00pm	09 The Day Care 10.00am - 12.00pm 12.30pm - 2.00pm 2.30pm - 4.00pm 4.30pm - 6.00pm	10 The Day Care 10.00am - 12.00pm 12.30pm - 2.00pm 2.30pm - 4.00pm 4.30pm - 6.00pm	11 WOMEN'S FLU/SHINGLES 10.00am - 12.00pm 12.30pm - 2.00pm 2.30pm - 4.00pm 4.30pm - 6.00pm
06 The Day Care 10.00am - 12.00pm 12.30pm - 2.00pm 2.30pm - 4.00pm 4.30pm - 6.00pm	07 WOMEN'S FLU/SHINGLES 10.00am - 12.00pm 12.30pm - 2.00pm 2.30pm - 4.00pm 4.30pm - 6.00pm	08 The Day Care 10.00am - 12.00pm 12.30pm - 2.00pm 2.30pm - 4.00pm 4.30pm - 6.00pm	09 Mental Health U.K. (M/17) 10.00am - 12.00pm 12.30pm - 2.00pm 2.30pm - 4.00pm 4.30pm - 6.00pm	10 The Day Care 10.00am - 12.00pm 12.30pm - 2.00pm 2.30pm - 4.00pm 4.30pm - 6.00pm	11 The Day Care 10.00am - 12.00pm 12.30pm - 2.00pm 2.30pm - 4.00pm 4.30pm - 6.00pm	12 WOMEN'S FLU/SHINGLES 10.00am - 12.00pm 12.30pm - 2.00pm 2.30pm - 4.00pm 4.30pm - 6.00pm
07 The Day Care 10.00am - 12.00pm 12.30pm - 2.00pm 2.30pm - 4.00pm 4.30pm - 6.00pm	08 WOMEN'S FLU/SHINGLES 10.00am - 12.00pm 12.30pm - 2.00pm 2.30pm - 4.00pm 4.30pm - 6.00pm	09 The Day Care 10.00am - 12.00pm 12.30pm - 2.00pm 2.30pm - 4.00pm 4.30pm - 6.00pm	10 Mental Health U.K. (M/17) 10.00am - 12.00pm 12.30pm - 2.00pm 2.30pm - 4.00pm 4.30pm - 6.00pm	11 The Day Care 10.00am - 12.00pm 12.30pm - 2.00pm 2.30pm - 4.00pm 4.30pm - 6.00pm	12 The Day Care 10.00am - 12.00pm 12.30pm - 2.00pm 2.30pm - 4.00pm 4.30pm - 6.00pm	13 WOMEN'S FLU/SHINGLES 10.00am - 12.00pm 12.30pm - 2.00pm 2.30pm - 4.00pm 4.30pm - 6.00pm
08 The Day Care 10.00am - 12.00pm 12.30pm - 2.00pm 2.30pm - 4.00pm 4.30pm - 6.00pm	09 WOMEN'S FLU/SHINGLES 10.00am - 12.00pm 12.30pm - 2.00pm 2.30pm - 4.00pm 4.30pm - 6.00pm	10 The Day Care 10.00am - 12.00pm 12.30pm - 2.00pm 2.30pm - 4.00pm 4.30pm - 6.00pm	11 Mental Health U.K. (M/17) 10.00am - 12.00pm 12.30pm - 2.00pm 2.30pm - 4.00pm 4.30pm - 6.00pm	12 The Day Care 10.00am - 12.00pm 12.30pm - 2.00pm 2.30pm - 4.00pm 4.30pm - 6.00pm	13 The Day Care 10.00am - 12.00pm 12.30pm - 2.00pm 2.30pm - 4.00pm 4.30pm - 6.00pm	

Cheshire College
South & West

**NCFE
Qualification
Understanding
Domestic Abuse
Level 2**

AGE 19+
FREE 4
WEEK
COURSE

**Starts Friday
1st March 2024
March
10am - 12 noon**



8th, 15th & 22nd March 2024
10am - 12 noon

Learning Outcomes

- Understand domestic abuse
- Understand the signs and risk factors associated with domestic abuse
- Understand the impact of domestic abuse
- Understand policy, response and intervention in relation to domestic abuse

Motherwell Cheshire
62 Beech Drive, Wistaston, Crewe
CW2 8RG
Tel: 01606 557666



In Partnership with Motherwell Cheshire Cio

Counselling Skills Level 3

This qualification is designed for learners interested in using counselling skills as part of their functional role in a range of sectors or for learners who want to progress from their Level 2 Counselling skills qualification. It will provide learners with more in-depth knowledge of the use of counselling skills in everyday life and work, including the key theoretical approaches.

This course is FREE to complete if you meet all eligibility criteria for funding


What you will learn?

- Opportunity to identify, practice and develop a range of interpersonal and counselling skills
- Be aware of the skills required to initiate, maintain and conclude a counselling skills interaction
- Understanding of how to evaluate key elements of the main theoretical approaches to counselling
- Understand how to work ethically with counselling skills
- Understand what is meant by an ethical framework
- Understand the concepts of ethical referrals
- Knowledge of the implications of applying counselling skills in a diverse society
- Opportunity to reflect on your personal development and the way in which you can interact with others
- Evaluate ways to overcome barriers to personal development and self-awareness


What you will get?

Accredited Certification

NCFE CACHE Level 3 Diploma in Counselling Skills



@3dtraining.uk



Education & Skills Funding Agency

Induction:
Wednesday 17th April
10am - 1pm

Start Date:
Wednesday 24th April
10am - 2.30pm

13 Sessions Every Wednesday

Location:
Motherwell Centre, 62 Beech Drive,
Wistation, Crewe, CW2 8RG

To book on to this course or if you have any questions please contact the team:

info@3dtraining.uk.com
0151 294 4749

This programme has been funded by the Adult Education Budget

Our NHS Team

Nursing Team

Direct phone numbers to the nursing team are:

01270 826151 there is an answerphone on this.

01270 826150 there is no answerphone on this.

Physiotherapy and Occupational Therapy

Hayley Mitchell, Physiotherapist, is in school Monday to Friday

Caitlin Graham-Smith, Physiotherapist, working in school Thursdays and Fridays

Lucy Webb, Occupational Therapist works Monday, Wednesday, Thursday; and is part of the Therapy Outreach Programme.

Therapy Assistants: Liz Lehm, Jane Mather, Grace Bullen, and Megan Powell

Yvonne Williams, Occupational Therapist works on a Monday.

Physio/OT direct line: 01270 826153

Wheelchair assessment unit: 01270 826323

Wheelchair repairs: Rosscare 0151 6536000

Speech Therapy

Phone the school on 01270 691900 or on direct line 01270 826152.

Jo Currie is in school Monday, Tuesday, and Wednesday.

Alex Makin is in school Wednesday morning, Thursday, and Friday.

Cathy Webster and Rachel Turner are our Speech and Language Therapy Assistants

Email: joanne.currie2@mcht.nhs.uk

alex.makin@mcht.nhs.uk

Or contact via eSchools.

Uniform

Our uniform supplier is [Badged](#).

Address: Cockayne House, Love Ln, Sandbach CW11 2TS

Phone: 01477 500504

You can order via the link above or visit the store to check sizing and try on the uniform.
They are very SEN friendly and will arrange for a quiet zone if needed.

Contact Us

If you need to contact us:

Springfield School

Crewe Green Road

Crewe

CW1 5HS

Telephone: 01270 691900

Email: head@springfield.cheshire.sch.uk